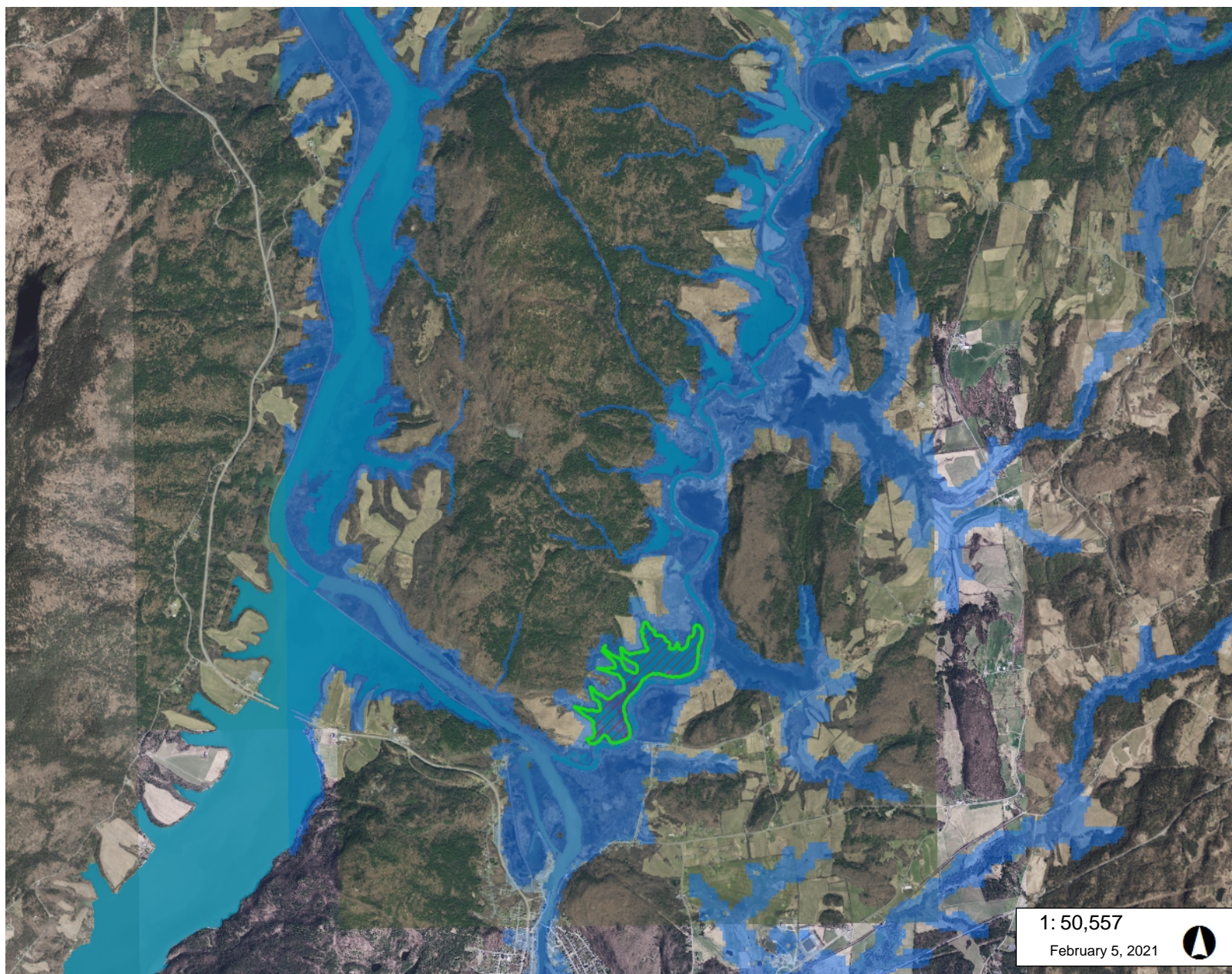




## LEGEND

- Aquatic Habitats - Highest Priority
- Surface Water and Riparian Areas - High Priority
- Surface Water and Riparian Areas - Low Priority



1: 50,557

February 5, 2021



843.0 0 422.00 843.0 Feet

WGS\_1984\_Web\_Mercator\_Auxiliary\_Sphere  
© Vermont Agency of Natural Resources

THIS MAP IS NOT TO BE USED FOR NAVIGATION

**DISCLAIMER:** This map is for general reference only. Data layers that appear on this map may or may not be accurate, current, or otherwise reliable. ANR and the State of Vermont make no representations of any kind, including but not limited to, the warranties of merchantability, or fitness for a particular use, nor are any such warranties to be implied with respect to the data on this map.

## NOTES

Map created using BioFinder. February 5, 2021